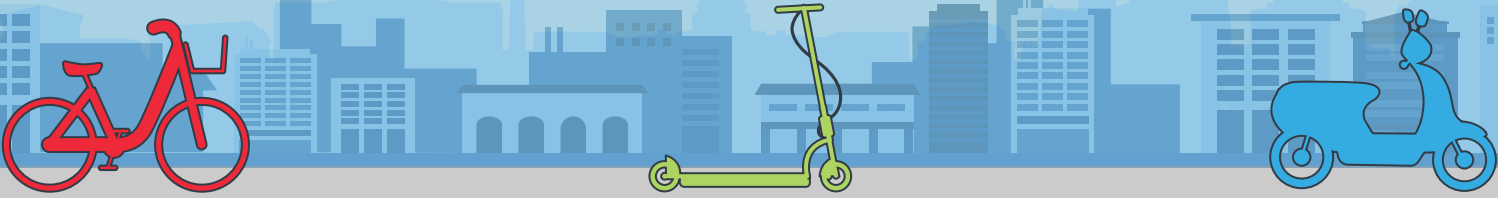


EXPLORE BIKES AND MORE IN DC

A comprehensive guide to biking in the District.

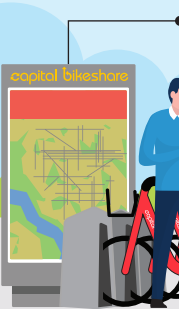


WHAT'S AVAILABLE?

capital bikeshare

How to Access

Rent via the Capital Bikeshare App or purchase memberships online or at a station.



Single Trips:
\$1 Unlock Fee
Classic Ride: \$0.05/Minute
Ebike Ride: \$0.15/Minute

Annual Membership
\$95/Year
Unlimited Classic Rides
33% off Ebike Rides

Where to Park

End your ride by returning your bike to a Capital Bikeshare station. You can also park ebikes at any public bike rack within the service area for an additional \$2.



Returning a Bike

If a station is full and there are no remaining docks, go to another station to dock the bike.



Reporting a Problem

Report issues to customer service via phone number, email, website, or social media @bikeshare.



1-877-430-2453
customerservice@capitalbikeshare.com

Bikeshare, Scooters, and Mopeds

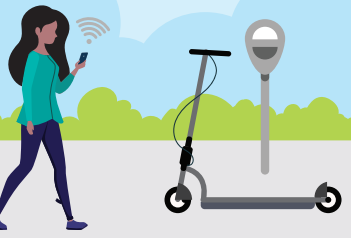
How to Access

Rent via an app provided by the dockless bikeshare, scooter, or moped company.



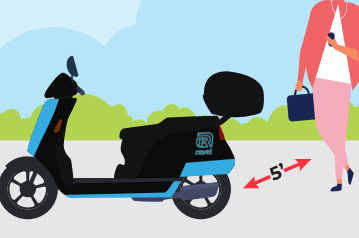
Where to Park

Park your vehicle by locking it in a designated station or to a bike rack, bike/scooter corral, parking signpost, or stop sign.



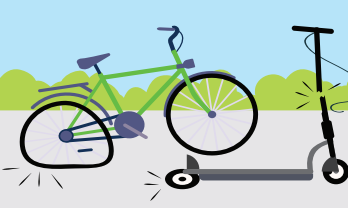
Returning a Vehicle

Vehicles must maintain 5 ft. of pedestrian travel space without blocking access to private properties or driveways.



Reporting a Problem

Report issues to appropriate dockless bikeshare, scooter, or moped company via app or website. You can also report parking issues via 311.



Personal Bike

How to Access

Use your personal bike to travel around the District.



Where to Park

Park at a bike rack or signpost. Do not lock bike to a tree, fence, or areas that impede access for others.



How to Lock Your Bike

To properly secure your bike, use a U lock to lock the frame and back wheel to a bike rack or signpost.



Reporting a Problem

If you see an abandoned bike or any other issues in public space, report it to 311.



Did You Know? Did you know that DC has over 160 miles of bike lanes and trails? Learn more about biking in the District and download the DC Bike Map at godcgo.com/bike.