

# SCOOTING IN DC

SCOOTING IS A NEW SUSTAINABLE MOBILITY OPTION IN THE DISTRICT.  
FOLLOW THE TIPS BELOW TO ENSURE A SAFE CITY FOR EVERYONE.



**Follow all traffic laws**

**Wear a helmet**



**Use bike lanes**  
when available

**Children are not allowed to ride**

**Park scooter upright by curb**  
leaving at least 5 feet of space on the sidewalk

**Limit 1 person per scooter**

**Yield to pedestrians**



**Scan for more information**

goDCgo.com  
info@goDCgo.com  
202.299.2186



**d.** WE ARE GOVERNMENT OF THE DISTRICT OF COLUMBIA  
MURIEL BOWSER, MAYOR

# RULES AND SAFETY TIPS

**Sidewalk riding is illegal in downtown DC** (Central Business District); if on sidewalk, you must walk the scooter

**Be mindful of parked cars; doors may open unexpectedly**

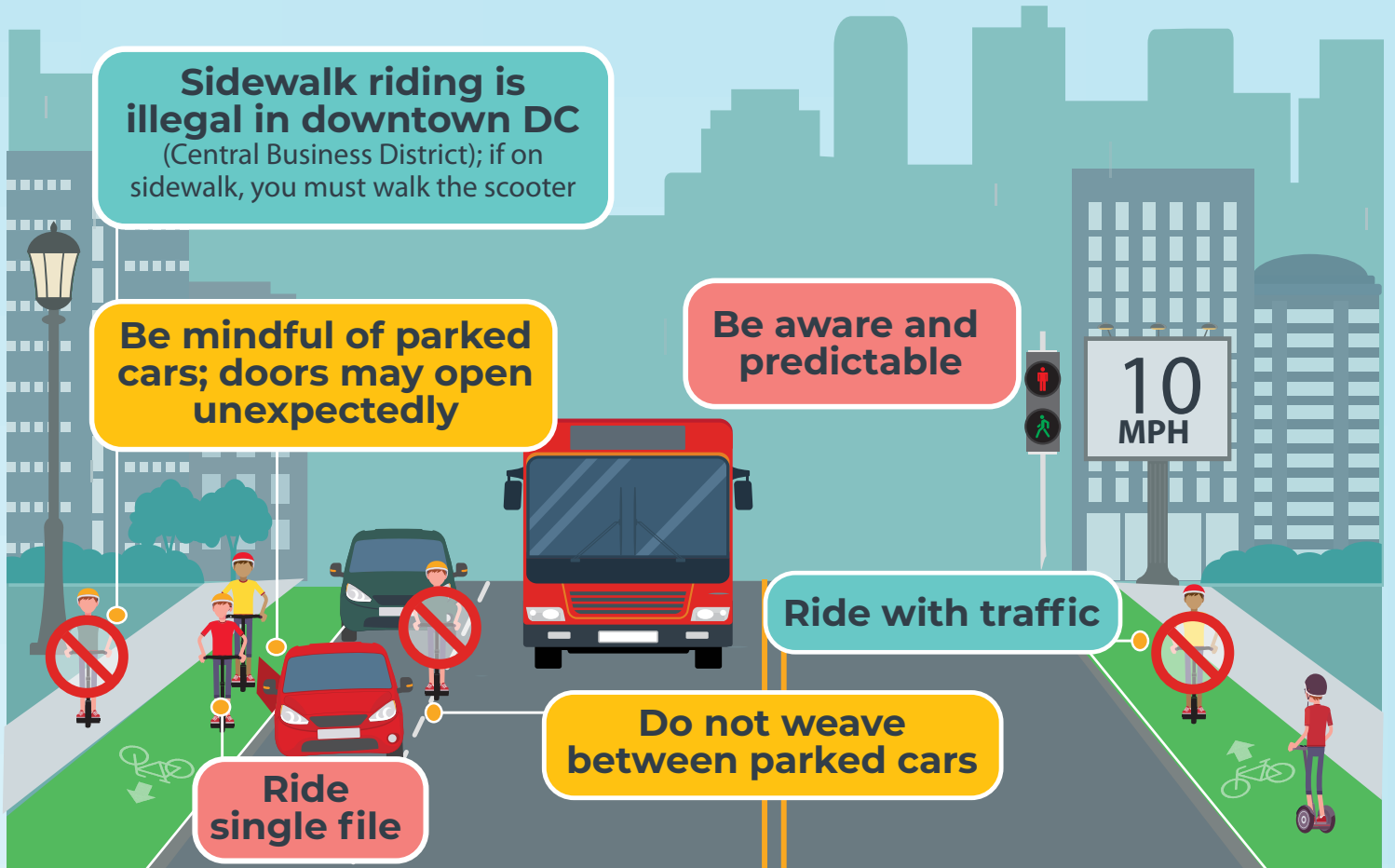
**Be aware and predictable**

**Ride with traffic**

**Do not weave between parked cars**

**Ride single file**

10  
MPH



## How to report a problem:

Contact information for each scooter company is available on the device.

## Where to park a scooter:

**Scooter corral:** Scooter corrals are located in the street. Please park in these designated spaces or at a bike rack.

